



LIF Global Brazil

The Leaders in Innovation Fellowships Global programme

The Royal Academy of Engineering's Leaders in Innovation Fellowships (LIF) programme supports talented entrepreneurs from around the globe to turn their engineering innovations into impactful, sustainable businesses.

What we do

We nurture bold, scalable innovations from all areas of engineering and technology that are addressing some of the world's most complex environmental, economic, and societal challenges.

Our USP

- Our personalised approach focuses on acquiring foundational entrepreneurship skills. These then lead to accelerated commercial growth, job creation, and investment in the businesses our programme supports.
- Our entrepreneurs benefit from the Academy's unique,

prestigious network, which brings together expert Academy Fellows, likeminded entrepreneurs, investors, business leaders, researchers, and policymakers.

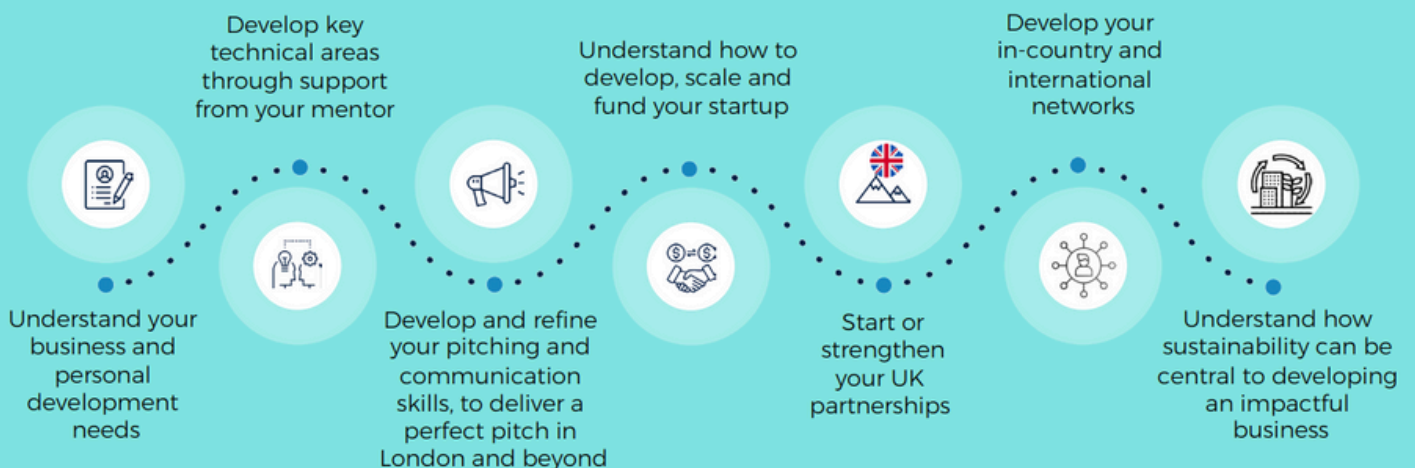
- We empower a worldwide community of more than 1,400 alumni to support each other, and curate a programme of networking events, pitch opportunities and ongoing entrepreneurship training.
- We don't take equity, fees or IP.

Our offer

- **Smart, flexible training**, designed around the needs of our innovators.
- **Tailored mentoring** from highly accomplished entrepreneurs and business leaders.
- **A network of peers** in the UK and internationally.
- **Ongoing support** from the Academy's global network and unique convening power.



The LIF Global journey



LIF Brazil – impact

LIF Global Brazil in 2022



5 innovators
graduated



Over 150 hours
of training and mentoring



5 UN SDGs out of 17
delivered against

Since 2018

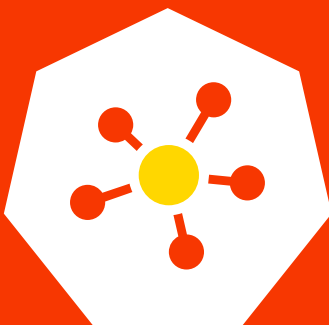


118
alumni
members



Over \$10 million
of third party follow-on
funding raised

Impact of the programme across the world:



Since 2014 1,450
LIF alumni from
19 countries
commercialised their
innovation and gathered in
an active online community



More than 6,800
jobs created
through innovators'
companies



In excess of \$192
million raised
as further funding by
innovators to support their
technology

LIF Global 2022 innovators

1. **Thomaz Augusto Guisard Restivo, Metallic Diamond Alloys** - a project using metallic diamonds and derived products to create construction materials with better performance, reasonable costs and better environmental impact.

2. **Gustavo de Souza, Cell-B** - an innovative biodegradable packaging that eliminates the need for multilayer plastic packaging without compromising shelflife of food.

3. **Fabio Santos, Cacaos biocosmetics** - natural, organic, vegan, and environmentally friendly cosmetics compatible with several kinds of skins and hairs made of cacao farm wastes.

4. **Marina Souza VETRA, Bioglass** - a new bioactive glass that can effectively speed up cell proliferation, leading damaged tissue to heal faster. This technology can lower treatment costs, lead to a faster hospital discharge and improve the patient's quality of life.

5. **Marzieh Kadivar, BamBuild** - high-performance materials made from natural bamboo, using a zero-waste process, to address the environmental concerns related to construction.



About LIF Global Brazil

LIF Global Brazil is delivered in partnership with CNPq, and Wylinka.

The primary partner for LIF Global 2025 in Brazil is CNPq. The Brazilian National Council for Scientific and Technological Development (CNPq) is an organization of the Brazilian federal government under the Ministry of Science and Technology, dedicated to the promotion of scientific and technological research and to the formation of human resources for research in the country.

The secondary partner is Wylinka, a non-profit organization whose purpose is to transform scientific knowledge into innovations that improve people's daily lives, and promote the economic, social and sustainable development of Brazil.



The journey with the startup has been amazing. I always tell my friends about the LIF programme - it has been life changing for me. I am more entrepreneurial now! I am trying to sell services, reach new markets and discover new ways of achieving revenue. For me, LIF has been really important in making myself an entrepreneur.

Natanael Leitão, CEO of YLife, LIF5

Contact information

Academy contact

Gaëlle Elisha Programme
Manager,
Entrepreneurship for
Development

Gaëlle.Elisha@raeng.org.uk

+44 207 766 0613

CNPq contact

Flavio Velame

fvelame@cnpq.br



The **Royal Academy of Engineering** is harnessing the power of engineering to build a sustainable society and an inclusive economy that works for everyone. In collaboration with our Fellows and partners, we're growing talent and developing skills for the future, driving innovation and building global partnerships, and influencing policy and engaging the public. Together we're working to tackle the greatest challenges of our age.

Royal Academy of Engineering
Prince Philip House
3 Carlton House Terrace
London SW1Y 5DG

Tel: +44 (0)20 7766 0600

www.raeng.org.uk

[@RAEngGlobal](https://twitter.com/RAEngGlobal)

Registered charity number 293074