



LIF Global South Africa

The Leaders in Innovation Fellowships Global programme

The Royal Academy of Engineering's Leaders in Innovation Fellowships (LIF) programme supports talented entrepreneurs from around the globe to turn their engineering innovations into impactful, sustainable businesses.

What we do

We nurture bold, scalable innovations from all areas of engineering and technology that are addressing some of the world's most complex environmental, economic, and societal challenges.

Our USP

- Our personalised approach focuses on acquiring foundational entrepreneurship skills. These then lead to accelerated commercial growth, job creation, and investment in the businesses our programme supports.
- Our entrepreneurs benefit from the Academy's unique,

prestigious network, which brings together expert Academy Fellows, likeminded entrepreneurs, investors, business leaders, researchers, and policymakers.

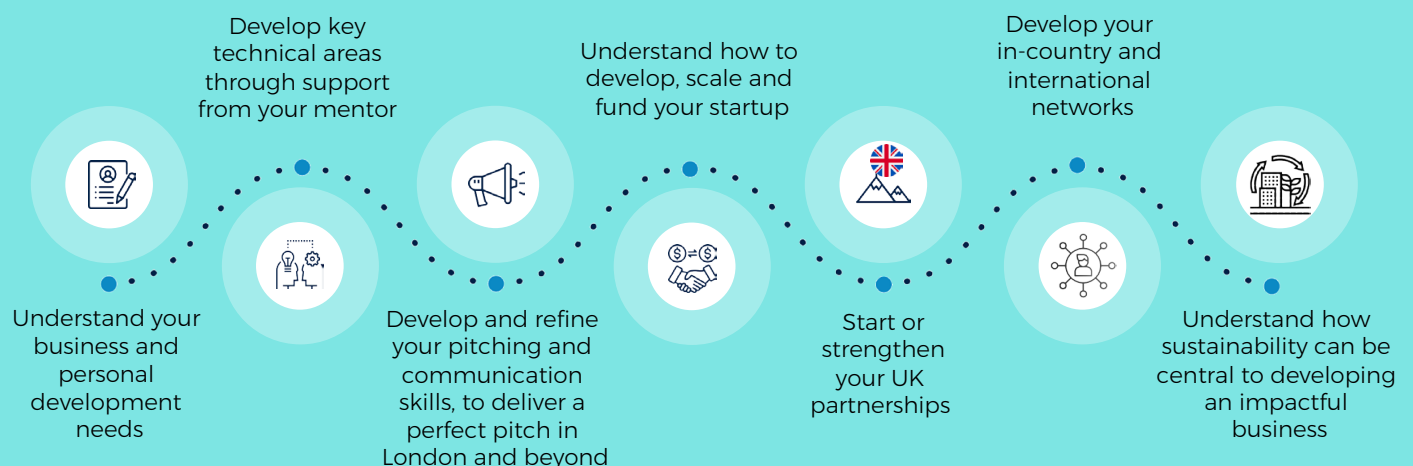
- We empower a worldwide community of more than 1,400 alumni to support each other, and curate a programme of networking events, pitch opportunities and ongoing entrepreneurship training.
- We don't take equity, fees or IP.

Our offer

- **Smart, flexible training**, designed around the needs of our innovators.
- **Tailored mentoring** from highly accomplished entrepreneurs and business leaders.
- **A network of peers** in the UK and internationally.
- **Ongoing support** from the Academy's global network and unique convening power.



The LIF Global journey



LIF South Africa – impact

LIF Global South Africa 2024



7 innovators
graduated



Over 300 hours
of training and mentoring



8 out of 17 SDGs
delivered against

Since 2014



96
alumni
members

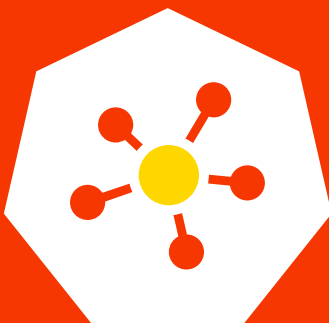


89
new high value
jobs created



Over \$8 million
of third party follow-on
funding raised

Impact of the programme across the world:



Since 2014 1,450
LIF alumni from
19 countries
commercialised their
innovation and gathered
in an active online
community



More than 6,800
jobs created
through innovators'
companies



In excess of \$192
million raised
as further funding by
innovators to support their
technology

LIF Global 2024 innovators

1. Sivuyile Ngcanga, Zula - allows navigation in township and rural areas where navigation is not possible due to lack of street names, allowing for the delivery of all types of services.

2. Bonginkosi Mabaso, Ann-Connect - provides students with access to online examinations without the use of internet connection.

3. Mthokozisi Simelane, Phytoconstituents for treatment of diabetes - a plant extract-based capsule that can be used as a complementary medicine for the treatment of diabetes.

4. Bandile Dlabantu, Khepri Onsite Bioconversion Unit - a waste bioconversion solution for businesses and communities to create a cleaner, greener future for all.

5. Mxolisi Boo, Bophelo App - an app that sends reminders to patients on chronic medication to keep track of medication usage, while providing educational resources to support patients in understanding their treatment and condition.

6. Moletsane Mophethe, Floc-Opex Recovery (FOR) - assisting water utilities through a resource recovery approach.

7. Joel Philpott, Inspyre - a device designed to both treat and streamlines the diagnosis pathway for sleep apnoea.



About LIF Global South Africa

The LIF Global programme is run in South Africa in partnership with the Technology Innovation Agency (TIA), and the University of Witwatersrand.

The primary partner for LIF Global 2025 in South Africa is the Technology Innovation Agency (TIA), an initiative of South Africa's Department of Science and Technology. TIA was established in 2008 with the objective of enabling and supporting technological innovation across all sectors to support positive socio-economic development, improve the quality of life for South Africans, and enhance the country's global competitiveness.

The secondary partner is the University of Witwatersrand, Johannesburg. With its 100 years of academic scholarship and research excellence, the University draws upon its abundance of knowledge, talent, and innovation to find solutions to the challenges of the 21st Century.



The LIF programme is an incredible opportunity to access mentors and seek advice, but also to speak with people coming from different backgrounds and experiences – people that may have solutions to the problems you are encountering.

Excellent Khumalo, LIF 6

Contact information

Academy contact

Gaelle Elisha Programme
Manager,
Entrepreneurship for
Development

Gaelle.Elisha@raeng.org.uk

+44 207 766 0613

TIA contact

Lucy Moteka

Lucy.Moteka@tia.org.za



The **Royal Academy of Engineering** is harnessing the power of engineering to build a sustainable society and an inclusive economy that works for everyone. In collaboration with our Fellows and partners, we're growing talent and developing skills for the future, driving innovation and building global partnerships, and influencing policy and engaging the public. Together we're working to tackle the greatest challenges of our age.

Royal Academy of Engineering
Prince Philip House
3 Carlton House Terrace
London SW1Y 5DG

Tel: +44 (0)20 7766 0600
www.raeng.org.uk

[@RAEngGlobal](https://twitter.com/RAEngGlobal)

Registered charity number 293074