



LIF Global South Africa

The Leaders in Innovation Fellowships Global programme

The Royal Academy of Engineering's Leaders in Innovation Fellowships (LIF) programme supports talented entrepreneurs from around the globe to turn their engineering innovations into impactful, sustainable businesses.

What we do

We nurture bold, scalable innovations from all areas of engineering and technology that are addressing some of the world's most complex environmental, economic, and societal challenges.

Our USP

- Our personalised approach focuses on acquiring foundational entrepreneurship skills. These then lead to accelerated commercial growth, job creation, and investment in the businesses our programme supports.
- Our entrepreneurs benefit from the Academy's unique,

prestigious network, which brings together expert Academy Fellows, likeminded entrepreneurs, investors, business leaders, researchers, and policymakers.

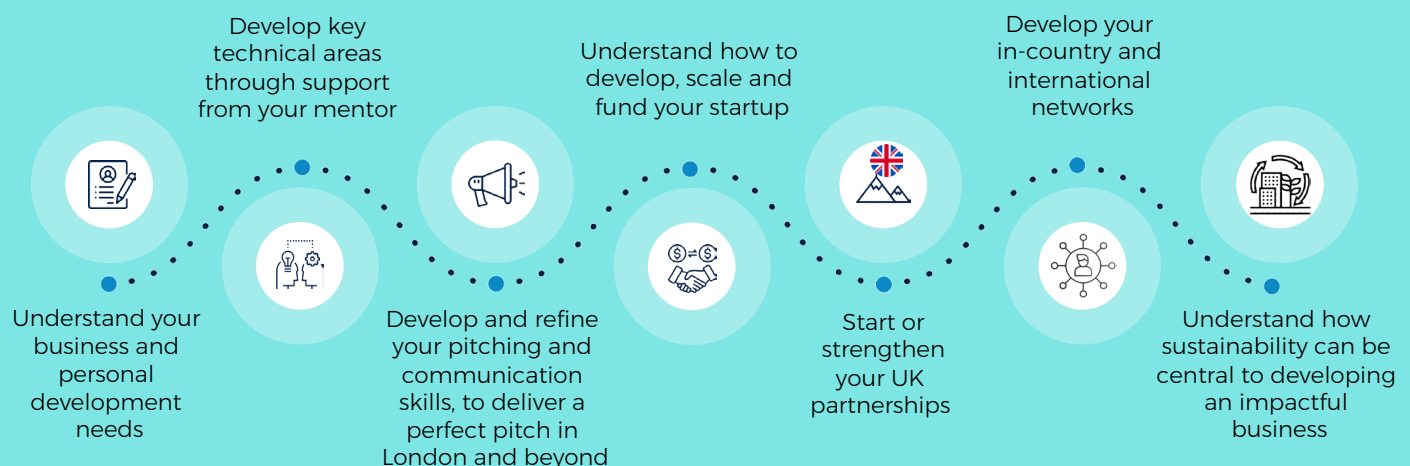
- We empower a worldwide community of more than 1,400 alumni to support each other, and curate a programme of networking events, pitch opportunities and ongoing entrepreneurship training.
- We don't take equity, fees or IP.

Our offer

- **Smart, flexible training**, designed around the needs of our innovators.
- **Tailored mentoring** from highly accomplished entrepreneurs and business leaders.
- **A network of peers** in the UK and internationally.
- **Ongoing support** from the Academy's global network and unique convening power.



The LIF Global journey



LIF South Africa – impact

Since 2014

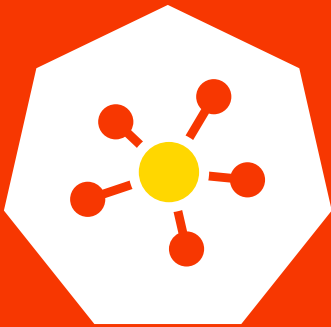


80
alumni
members



Over \$2 million
of third party follow-on
funding raised

Impact of the programme across the world:



Since 2014
1,400 LIF alumni
from 19 countries
commercialised their
innovation and gathered
in an active online
community



More than 3,500
jobs created
through innovators'
companies



In excess of
\$100 million raised
as further funding by
innovators to support their
technology



LIF7 innovators

- 1. Annemie Pretorius, BioCODE Gum Inflammation Biosensor** – a Gum Inflammation Biosensor that detects a specific harmful protein in blood to identify inflammation, thereby advancing disease research and treatment to reduce multiple diseases from progressing.
- 2. Dr Deon Neveling, Biotikum** – Biotikum develops and produces microbial additives for the agricultural industry. Microbial additives are environmentally friendly technology which promote sustainable farming practices and improves profitability.
- 3. Dr. Sean Perry, Treatment of acid mine drainage (AMD) using organic nano-composites** – a treatment of acid mine drainage using a unique absorption technology which is applicable anywhere there's a wastewater treatment plant.
- 4. Mr Pontsho Moletsane, Nosetsa** – an autonomous, remote, adaptable and solar powered smart irrigation solution that reduces economic costs associated with water over-use and water loss.
- 5. Mehdi Safari, GMS (Green Mining Solutions)** – a novel reactor which specifically designed to recover very fine particles generated in precious metal production.
- 6. Bonga Thombeni, Enhle Home Power Bank** – a distributed, utility-scale energy storage solution using photovoltaics technology.
- 7. Jo-Ann Passmore, Genital Inflammation Test (GIFT)** – an innovative rapid point-of-care test, empowering women to test reproductive health and inflammation associated with bacterial vaginosis or an STI.
- 8. Boitumelo Makgabutlane, Waste-derived building and construction composite materials reinforced with carbon nanomaterials** – a low cost innovative zero-water zero-cement brick enhanced with carbon nanomaterials for superior strength and durability in building and construction, providing affordable housing and infrastructure while liberating the environment from waste.
- 9. Xabiso Lombo, Guardian Gabriel** – a panic button for women that aids in times of danger.



About LIF Global South Africa

The LIF programme has been running in South Africa since 2014, in partnership with the Technology Innovation Agency (TIA), an initiative of South Africa's Department of Science and Technology.

TIA was established in 2008 with the objective of enabling and supporting technological innovation across all sectors to support positive socio-economic development, improve the quality of life for South Africans, and enhance the country's global competitiveness.



The LIF programme is an incredible opportunity to access mentors and seek advice, but also to speak with people coming from different backgrounds and experiences – people that may have solutions to the problems you are encountering

Excellent Khumalo, LIF 6

Contact information

Academy contact

Gaëlle Elisha
Programme Manager,
Entrepreneurship for Development
Gaëlle.Elisha@raeng.org.uk
+44 207 766 0613

TIA contact

Lucy Moteka
Lucy.Moteka@tia.org.za



The **Royal Academy of Engineering** is harnessing the power of engineering to build a sustainable society and an inclusive economy that works for everyone. In collaboration with our Fellows and partners, we're growing talent and developing skills for the future, driving innovation and building global partnerships, and influencing policy and engaging the public. Together we're working to tackle the greatest challenges of our age.

Royal Academy of Engineering
Prince Philip House
3 Carlton House Terrace
London SW1Y 5DG

Tel: +44 (0)20 7766 0600
www.raeng.org.uk
 [@RAEngGlobal](https://twitter.com/RAEngGlobal)
Registered charity number 293074